

SAMPLE OF FAQ



FAQ - Residency #3 – The Final Voyage

University of Lethbridge

Note Date Change: July 26 – 31, 2009

HOW DO WE GET THERE?

Lethbridge is approximately 510km from Edmonton and 216km from Calgary. If you are driving from Edmonton, this is the simplest route:

(Edmonton Int'l Airport {or your place of departure} to University of Lethbridge, 4401 University Dr W)

- Hwy-2 South out of Edmonton and past Calgary.
- Exit on the LEFT towards Fort at Crowsnest Hwy / Hwy-3 East / Hwy-2 South MacLeod/ Lethbridge/ Cardston.
- Merge onto Provincial Route 3 E / Crowsnest Hwy East / Red Coat Trail East.
- Exit towards West Lethbridge Hwy-25 South.
- Merge onto University Drive West.
- Turn Left on to Aperture Drive then turn Right towards the New Village Residences
- Park in the New Village Residence parking lot and come on in to Townhouse #101.



http://maps.google.ca/maps?f=d&source=s_d&saddr=yeg&daddr=4401+University+Dr+W+Lethbridge+AB&hl=en&geocode=&mra=ls&ll=53.492412,-113.510497&spn=0.004723,0.01929&ie=UTF8&ll=49.674405,-112.869673&spn=0.020551,0.077162&z=14

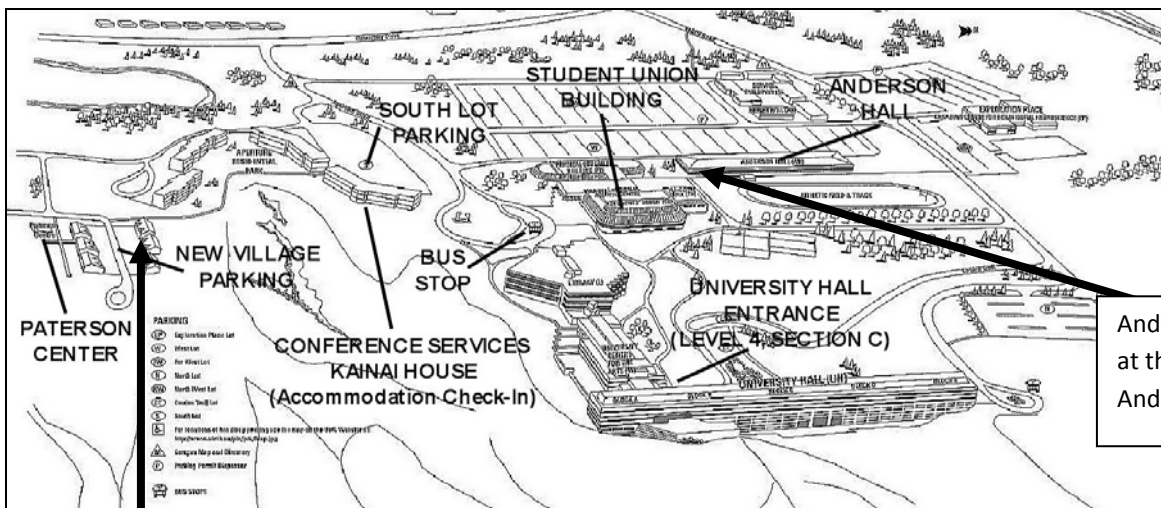


Figure 1 Go to Townhouse 101 in New Village Parking

SAMPLE OF FAQ

Drivers from Calgary can use the same directions as Hwy-2 South is the starting point. Mileage will be reimbursed at 0.43/km.

If you have not done so, please contact Mick ASAP to arrange flights - mick@vacationsplus.ca.
Place 'SEARCH R3- Lethbridge' in the subject line.



The schedule STARTS at noon on Monday and finishes at lunch on Friday. **Shuttles from the airport will be arranged** once we have confirmation of flights.

Please **keep the travel arrangements made by Vacations Plus.*

If you MUST change your flight, the cost of that change will not be covered by SEARCH.

WHERE DO WE CHECK IN?

Registration will be available at 4:00 – 5:00 p.m., Sunday, July 26, New Residence Townhouse #101.

It is here that you will be assigned your rooms and provided with room keys, name tags, parking pass (if needed), SEARCH VII materials and useful / emergency information from the University. Jackie, Carole and Kelly will be there to greet you!

If you arrive EARLY, OR if you arrive AFTER the registration time is over you will need to check in at the Kainai House Conference Services office. Please go to Andy's Place for supper at 5:30 p.m. Sessions will be in Anderson Hall rooms 116 and 117.

WHERE WILL WE BE STAYING AND WHAT SHOULD WE BRING?

All participants, staff and faculty will be staying in the **New Residence Village**. One of the newest additions to the University, these modern residences are split into 4-bedroom town homes with a shared living space and kitchen.

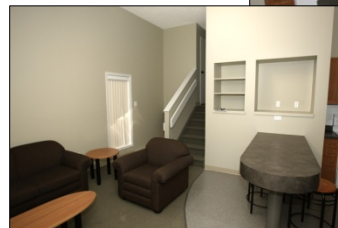
The park-like surroundings have been environmentally designed to maintain a sensitive balance between architectural aesthetics and the natural coulee landscape.



**Participants will each have a private bedroom.*

ITEMS PROVIDED IN TOWNHOUSES:

- Living Rooms: Couches, chairs and coffee table
- Kitchens: Some dishes (pots / pans / cutlery / bowls / plates in **limited** supply)
Coffee maker (bring your own grounds)
Toaster
Kettle
Microwave
Fridge & Stove
Dishwasher
- Bedrooms: Clock-radio
Double or twin bed
Desk and chair
Closet
- Bathrooms: Sink
Toilet
Tub / shower combination
Toilet Paper



****A daily housekeeping service will assist you in keeping the units neat and tidy! ****

Wireless access in the town homes is “spotty”. Please do not depend on internet access!

SAMPLE OF FAQ

All meals will be in Andy's Place at the close end of Anderson Hall. It's about a 5 minute walk.

SAMPLE OF FAQ

ITEMS NOT PROVIDED IN TOWNHOUSES:

- Cups and glasses (bring your Travel Mug)
- Telephone (pay phones in Kainai House – cell service throughout campus)
- Air Conditioning (at least the windows open)
- Fans
- Extra blankets
- Extra pillows
- Hair Dryer (and any other hair appliances you use)
- Shampoo and conditioner
- Soap or body wash

If there is something you absolutely cannot live without, BRING IT! For example, *earplugs* (for you light sleepers), your own comfortable *pillow*, extra *blanket* (it could be cool), a portable *fan* (it could also be hot), *coffee*, *tea*, *milk*, *sugar*, etc (there are several convenience stores are nearby if you prefer not to pack this type of stuff).

For your express convenience, we will walk past a Tim Horton's on our way to Andy's Place each morning!

Because the temperature / weather in Lethbridge is quite unpredictable it is advised you seal up your rooms (close windows and blinds) throughout the day and open them up in the late afternoon / evening.

HOSPITALITY SUITE

Each evening there will be a hospitality suite in the Paterson Center (directly behind the townhouses). A cash bar will be offered from 9:00 - 10:30pm. Non-alcoholic beverages will be available free of charge. The University of Lethbridge has asked that we confine the consumption of alcoholic beverages to this venue as it is not permitted in the residences.

WHAT IS THERE TO DO DURING FREE TIME?

During open access times, you will be able to make use of the University Centre for Sport and Wellness (a schedule will be provided when you arrive). The facility includes cardio / weight training equipment, main gymnasium, indoor and outdoor tracks and an indoor wall / rock climbing gym. To use the facilities and borrow equipment (basket balls, etc) just **leave your name with the person at the front desk** – a list of our group will be provided to the Centre for Sport and Wellness staff. <http://www.uleth.ca/hwc>



Two art galleries are located at the University of Lethbridge. The Main Gallery is in the Centre for the Arts and the Helen Christou Gallery is in the LINC Building, level 9. For more information on schedules and exhibits visit this website: <http://www.uleth.ca/artgallery/Ginfo.html>.

WHAT TO WEAR?

The weather / temperature can be quite unpredictable this time of year. Please be prepared for any and all situations. Check the weather before you pack.

Lethbridge Weather: <http://www.theweathernetwork.ca/weather/cities/can/Pages/CAAB0194.htm>

The air conditioning in the classrooms can be somewhat unpredictable and there is very little that we can do about it. The controls are computerized and are located in the Physical Plant. It is recommended that you dress in a cool, comfortable manner, but bring a sweater along just in case.

WHERE DO WE PARK?

Parking is available in front of your New Residence Village unit and at Paterson Centre. It is a lovely 5-10 minute walk over to Anderson Hall each day. Parking passes right outside Anderson Hall will be provided for those who are unable to carry their bags that distance – or simply for those who wish to have their car close by in case of poor weather. **Please contact Jackie if you wish to have a parking pass outside Anderson Hall.**

SAMPLE OF FAQ

As we get closer to Residency 3, there may be a few updates or changes to this information. These will be sent out by email as well. In the meantime, if you have any questions or concerns, please do not hesitate to contact Jackie Egg at Jackie.egg@searchca.net Carole Doucet-Love at Carole.DoucetLove@searchca.net or Kelly Wiens at Kelly.Wiens@searchca.net.

See you in Lethbridge!!

